

Alaska Coal

David Coil, PhD, Director¹, Erin McKittrick, M.S., Director², Bretwood "Hig" Higman, PhD, Executive Director³
contact@groundtruthtrekking.org

Last Modified: 8th April 2017

Alaska possesses **vast amounts of coal**, probably a major portion of the world's remaining coal resource. As a result, the choices that are made in Alaska regarding coal development will have a major local and global impact.

Even though small-scale mining **began here in the 1850's**, coal mining has never taken off in Alaska. **Usibelli Coal Mine** has been the only active coal mine in the state since 1971, producing 1.5 to 2 million tons of coal per year. But rising global energy demands and rising prices for other fuels have led to a new surge of interest in developing Alaskan coal. Current proposals to utilize Alaskan coal include two conventional strip mines: the **Chuitna Coal Mine** and the **Wishbone Hill Coal Mine**, several **coal-to-liquids plants**, and an **underground coal gasification** plant in Cook Inlet. For a succinct summary of all coal-related projects in the state see our **proposal overview page**.

Coal provided 42% of the electricity in the US in 2011, giving the country a **reliable source of energy**. However, coal has **greater environmental impact** than almost any other energy source, and those impacts can have **serious economic implications**. Additionally, coal power **is more expensive** than a number of other energy sources.

As Alaskans, we stand at a decision point. Do we send Alaska and the world into a coal-based future? Or do we choose other, less polluting fuels, either **non-renewable** or **renewable**?

Date Created: 25th March 2010

Background on Coal

- [Benefits of Coal](#)
- [Carbon Capture and Sequestration \(CCS\)](#)
- [Coalbed Methane](#)
- [Coal Combustion Methods](#)
- [Coal Combustion Wastes](#)
- [Coal Fires](#)
- [Coal Impacts](#)
- [Coal Mine Reclamation](#)
- [Coal Mining](#)
- [Coal Power is Not Cheap Power \(Report\)](#)
- [Coal Terminology: Resource and Reserve](#)
- [Coal to Liquids \(CTL\)](#)
- [Mercury from Coal](#)
- [Peak Coal](#)
- [Quantifying Coal: How Much is There?](#)
- [The True Cost of Coal](#)
- [Types and Composition of Coal](#)
- [Underground Coal Gasification \(UCG\)](#)
- [UCG Documents](#)
- [Uses of Coal](#)

Coal in Alaska

- [Alaska Coal and Carbon Dioxide Emissions](#)
- [Alaska Coal History](#)
- [Alaska Coal Proposals Overview](#)
- [Alaska Coal Resource: Potential for Future Development \(Report\)](#)
- [Coal Taxes, Rents and Royalties in Alaska](#)
- [Exporting Alaska's Coal](#)
- [Long-term Socioeconomic Impact of Coal in AK](#)
- [Opposition to Coal in Alaska](#)
- [Potential CO2 Emissions of the Chuitna Coal Field](#)

Active Coal Facilities in AK

- [Coal Power in Alaska](#)
- [Seward Coal Terminal](#)
- [Usibelli Coal Mine Inc.](#)

Active Coal Projects in AK

- [Canyon Creek Coal Leases](#)
- [Healy Clean Coal Plant \(HCCP\)](#)
- [Wishbone Hill Coal Mine](#)

Inactive Coal Projects in AK

- [Linc Energy UCG leases in AK](#)
- [Nanushuk Coal Prospect](#)
- [Stone Horn Ridge UCG](#)
- [Chuitna Coal Prospect](#)
- [Arctic Coal](#)
- [Beluga Coal-to-Liquids \(CTL\)](#)
- [Bering River Coal Field](#)
- [Bethel Coal Plant](#)
- [Chickaloon Coal Leases](#)
- [Emma Creek Energy Project](#)
- [Fairbanks Coal-to-Liquids \(CTL\)](#)
- [Healy Coal-to-Liquids \(CTL\)](#)
- [Jonesville Coal Mine](#)
- [Kenai Blue Sky Coal Power](#)
- [Matanuska Coal Plant](#)
- [Tyonek Coal-to-Liquids \(CTL\)](#)

<http://www.groundtruthtrekking.org/Issues/AlaskaCoal.html>

¹David Coil, PhD, Director;

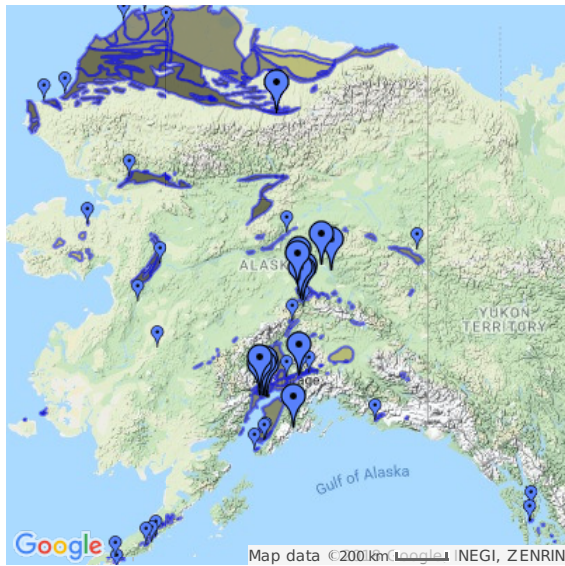
²Erin McKittrick, M.S., Director;

³Bretwood "Hig" Higman, PhD, Executive Director; contact@groundtruthtrekking.org

Creative Commons Attribution
Non-Commercial



Page 1 of 2



Coal in Alaska

Alaska coal map from [Ground Truth Trekking](#) key explaining map

Alaska is coal country. Mining **started in the 1850s**, and continues today at **Usibelli Coal mine**, the only remaining mine. There is interest in opening other mines, such as a **large mine on the Chuitna River** near Cook Inlet. For a metals mining map, go [here](#).

